

Acknowledgements:

Supervisor Mathias Plans (MSc)



# Reflexions 2.0

## Gesture-Based Interactive Art

Elina Meier

Software Engineering  
Master's thesis project

### intro

Gestural *Reflexions* is an interactive art installation, where users can **manipulate art by making gestures** towards a depth-sensing camera. The system is an extension to the previous *Reflexions* exhibit made in 2025.

### how does it work?

1. Use these gestures:



2. Point your hand to the camera.

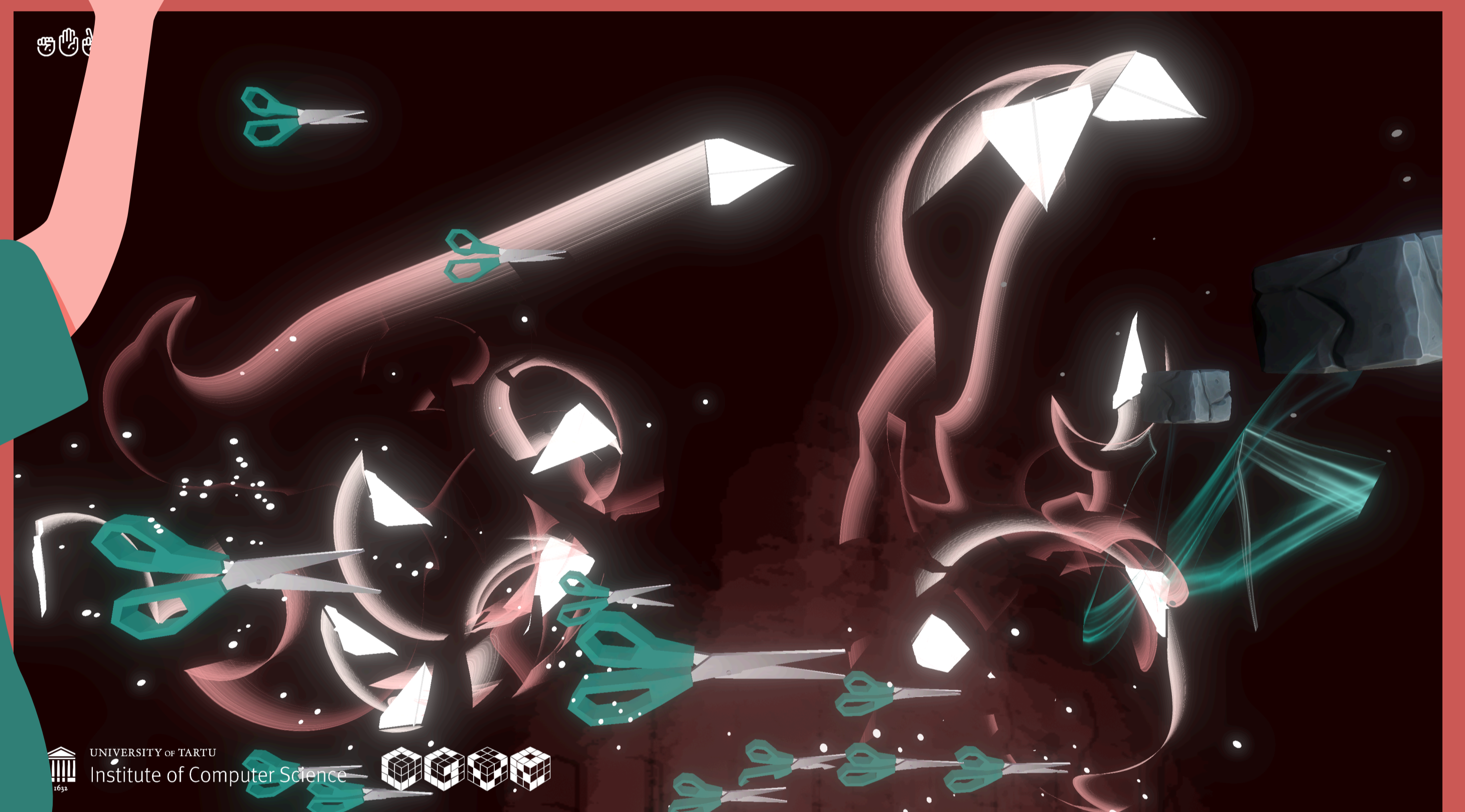
3. Gesture recognition & rendering.  
Read more:



4. Control the art.



LAVALAMP



ROCK-PAPER-SCISSORS



### about

The system uses an Intel RealSense SR305 depth camera. Its **RGB stream feeds gesture recognition**, while the **depth stream measures physical distance**. Visual effects get larger as a hand moves closer to the camera and smaller as it moves further.

Three interactive artworks respond to mid-air hand gestures in real-time. No controllers, no touchscreen, no prior instruction needed.

In **Rock-Paper-Scissors** all signs spawn 3D objects that battle each other.

In **Lavalamp** a fist pulls colourful fluid particles inward and a palm pushes them away.

In **Bloom** any detected hand spawns and guides a bee through a garden of lilies in bloom.