

# VLSM/CIDR

## Võrgutehnoloogia I

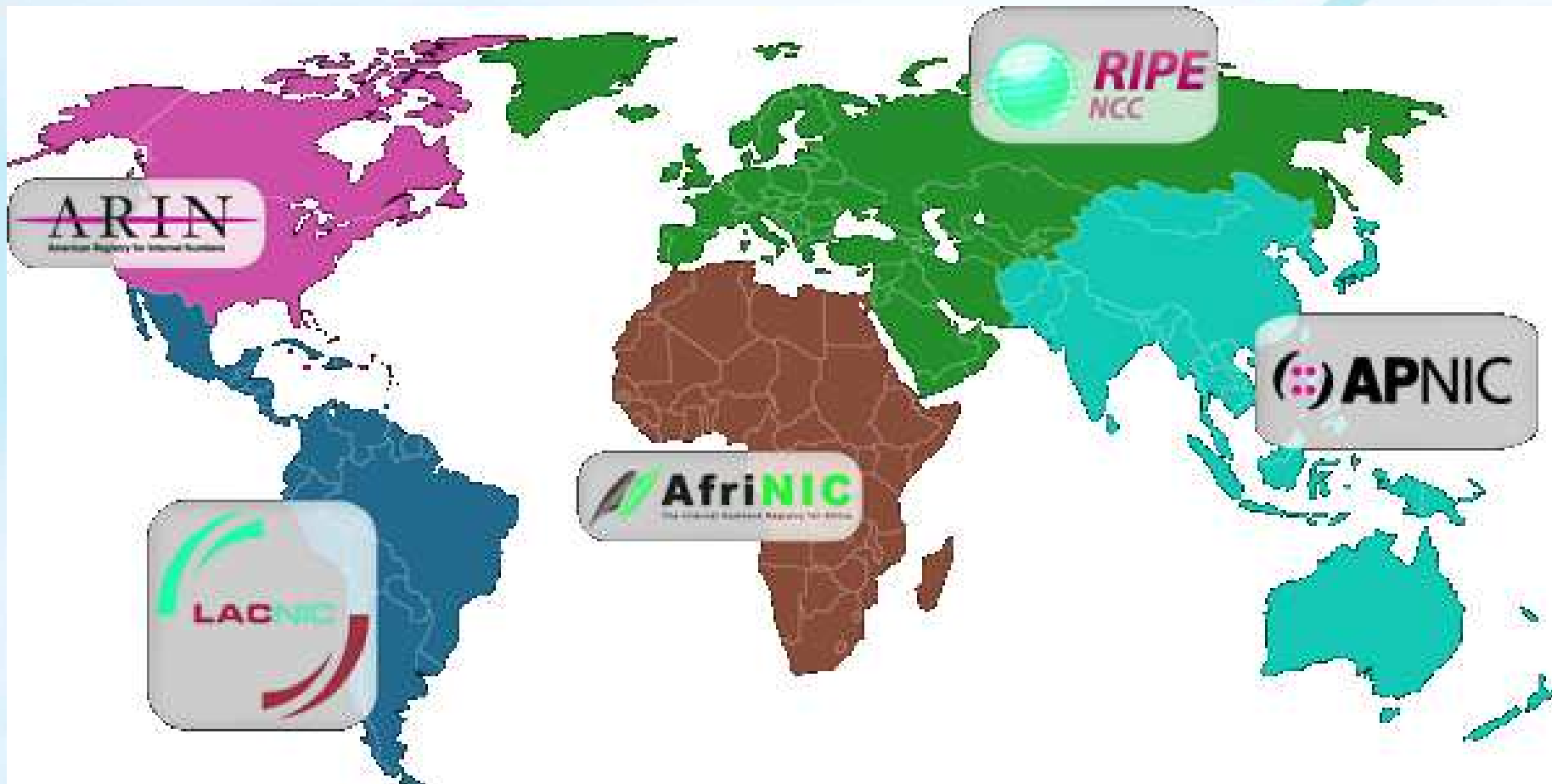
Erkki Laaneoks  
02.10.2014

# VLSM

- Aadressiklassidega A, B, C võrgud.
- Aadressiklassideta võrgud.
  - Milleks?

# IPv4 aadresside jagamine?

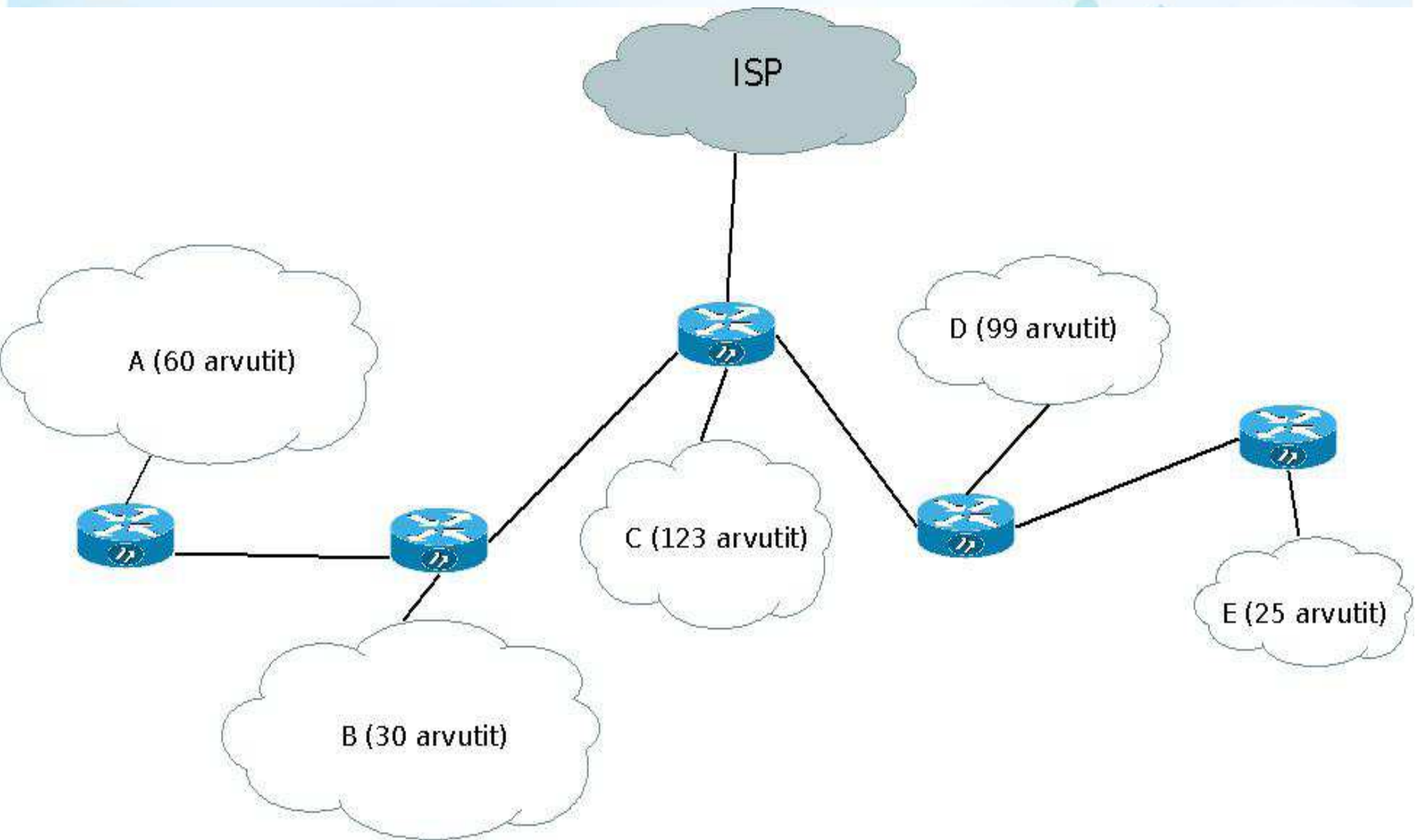
- RIR: ARIN, RIPE NCC, APNIC, LACNIC, AfriNIC.
- IP-aadresside jaotumine:  
<http://www.iana.org/assignments/ipv4-address-space/ipv4-address-space.xml>



255.255.255.192

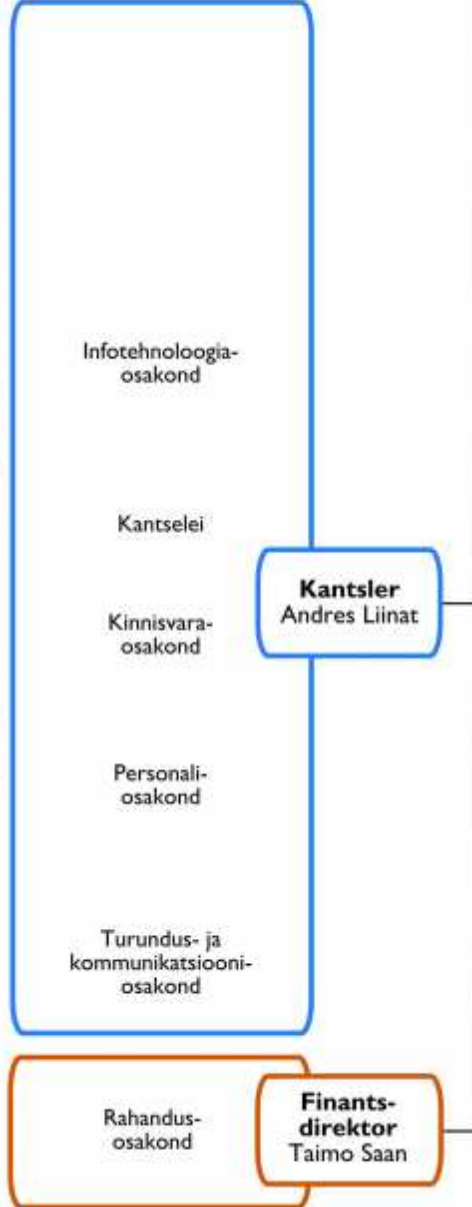
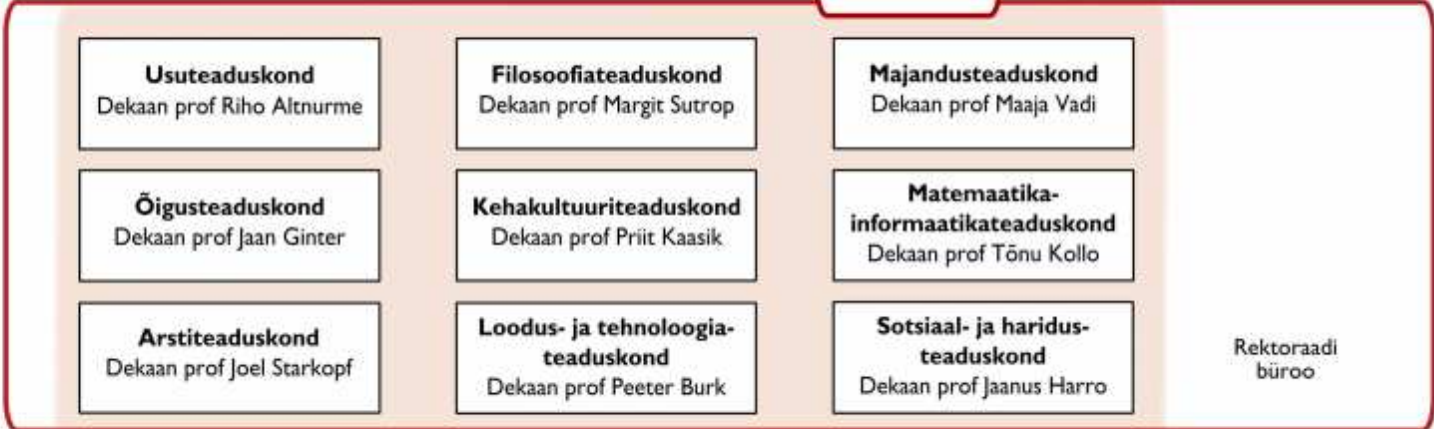
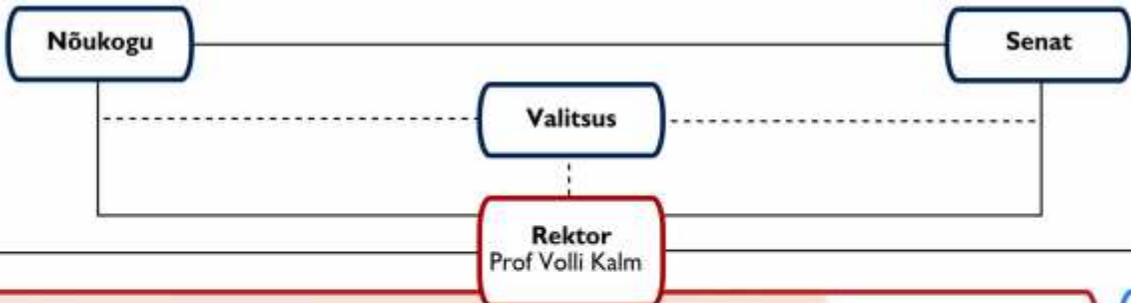
23.192.23

# Näidisjuhtum:

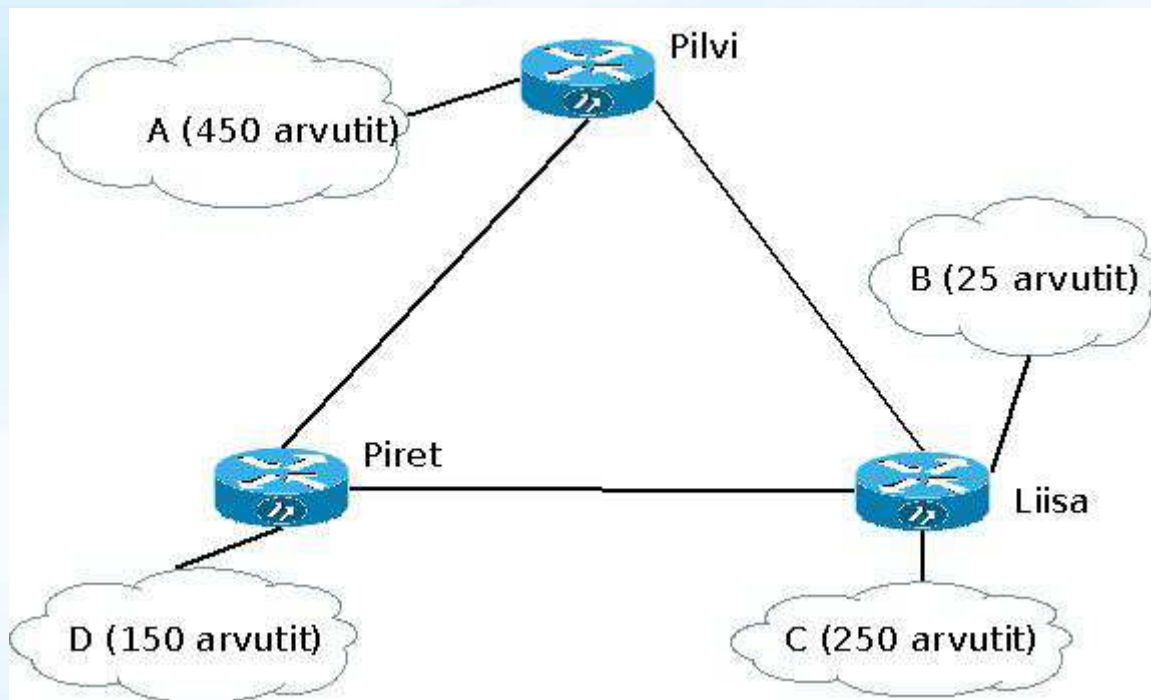


# Võimalikud variandid:

- 10.0.0.0/8
- 172.24.0.0/16
- 172.32.16.0/23
- 192.168.100.0/24
- 192.168.24.0/22
- 192.168.6.0/23
- Kasutada privaatseks kasutamiseks mõeldud aadressiruumi.
- Milline neist on sobilik ja säästlikuim?
- Täida tabel (võrguaadress, mask, leviedastusaadress, kasutatavad aadressid)



# Teine juhtum:



Jagada võrk:  
172.27.0.0/16